

December 2, 2023

Gongora claudiae Sauleda, Uribe-Velez & Szlachetko (Orchidaceae), an Addition to the Flora of Colombia.

Ruben P. Sauleda¹, Carlos Uribe-Velez², and Dariusz L. Szlachetko³.

¹6442 SW 107 Ct. Miami, FL 33173.

²Calle 115 #5-23 Bogota, Colombia.

³Department of Plant Taxonomy and Nature Conservation, University of Gdańsk, Wita Stwosza 59, 80-308 Gdańsk, Poland.

Abstract

A new species of *Gongora* Ruiz & Pav. (Orchidaceae) is reported for Colombia, from the Department of Antioquia, municipality of Marinilla.

Introduction

The genus *Gongora* Ruiz & Pav. consists of over 78 species of which 32 are found in Colombia. Classifying the species of *Gongora* can be difficult due to the range of color variation found in many of the species. However, the shape, location and angle of the basal horns and the shape and size of the hypochile, mesochile and epichile are constant within each species. These are the elements that must be considered in identifying the species.

A population of *Gongora* was discovered in the department of Antioquia, which differs markedly from the known species in the basic elements of the labellum especially the bristles of the mesochile, which are short and yellow. We here describe it as a new species.

Gongora claudiae Sauleda, Uribe-Velez & Szlachetko, sp. nov.

Type: Colombia, Department of Antioquia. Epiphytic in a tall tree in the municipality of Marinilla at 2180 m. Collector: Claudia Uribe, s. n., 2021. Holotype: HPUJ.

Etymology

This species was named in honor of Claudia Uribe the cultivator and who made the plant available to us for study.

Diagnosis

Gongora claudiae is similar to *Gongora gibba* Dressler from Panama, but differs in the form of the labellum. The hypochile is short and high, with reduced apical projections, which are shorter than the height of the hypochile. In *G. gibba* the hypochile is long acuminate. The epichile in *G. claudiae* is acute where in *G. gibba* it is long acuminate.

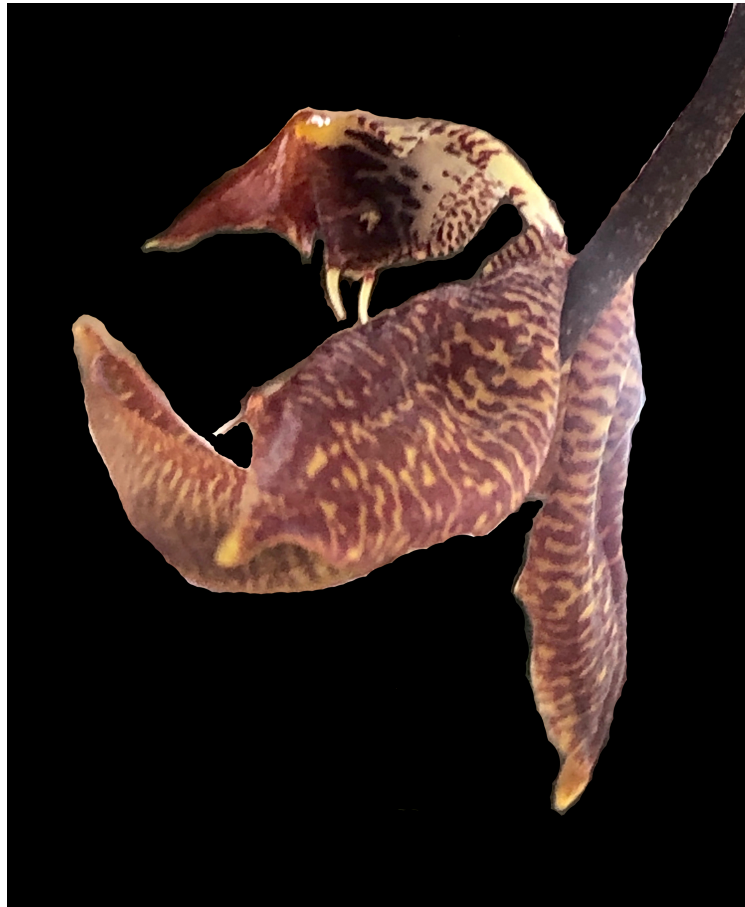
Gongora claudiae is similar to *Gongora latisejala* Rolfe from Colombia to Peru, and *Gongora maculata* Lindl. from Guyana, Peru and Colombia, but differs in that in both these species the basal projections of hypochile are placed just above the base, apical hypochile projections are much longer than in *G. claudiae*, and the apex of epichile is acuminate.

The form of *G. claudiae* is similar to *Gongora chocoensis* Jenny from Colombia, in having relatively high hypochile with lateral projections placed near the middle of the hypochile, but with very short apical projections, acute (not apiculate) and the epichile is adorned with shallow knob-like upper basal projection.

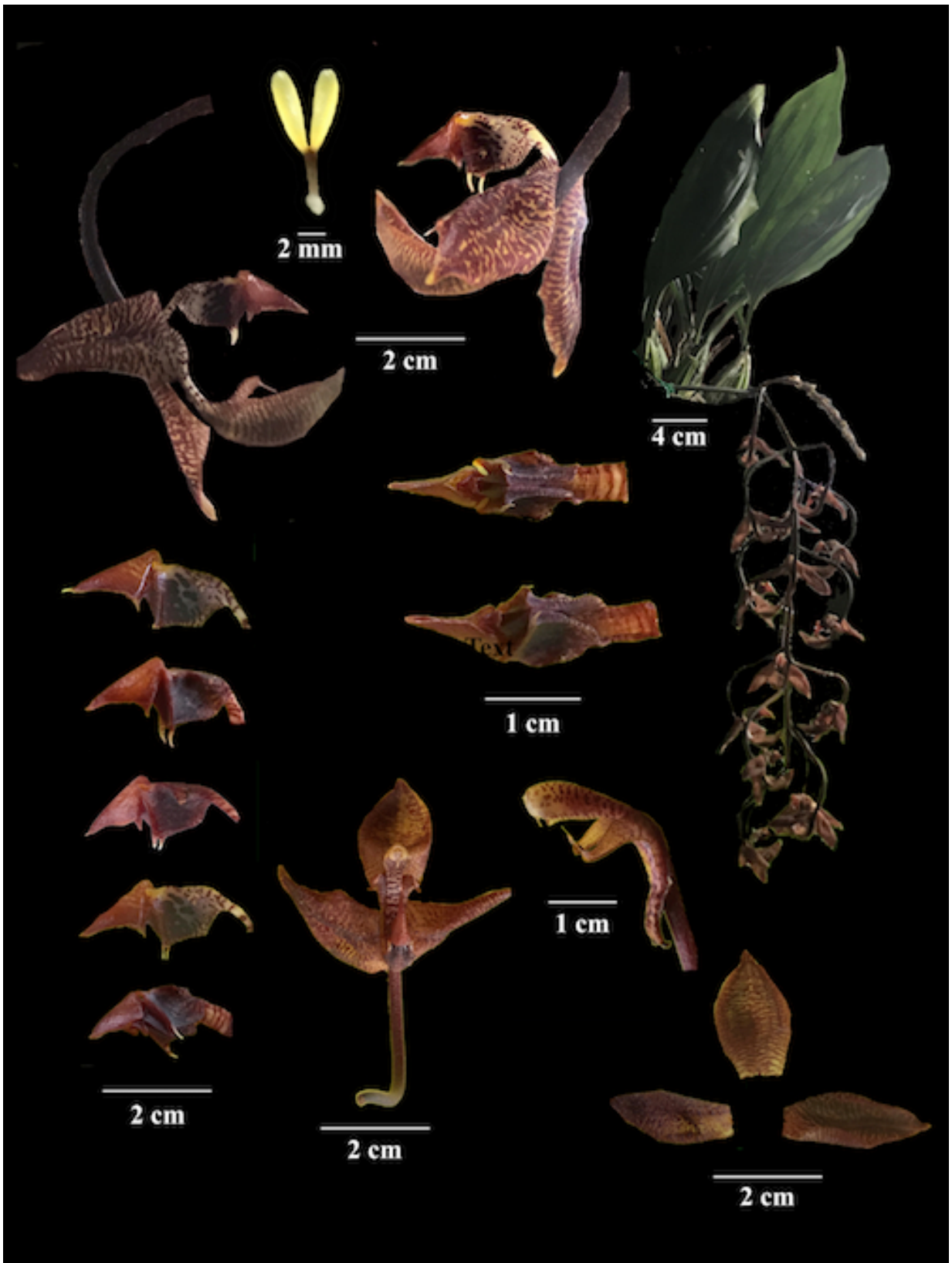
The labellum of *G. claudiae* differs from all the other species mentioned above by having prominent long claw.

Description

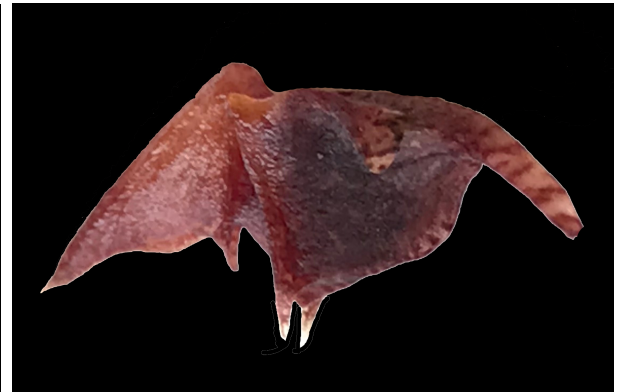
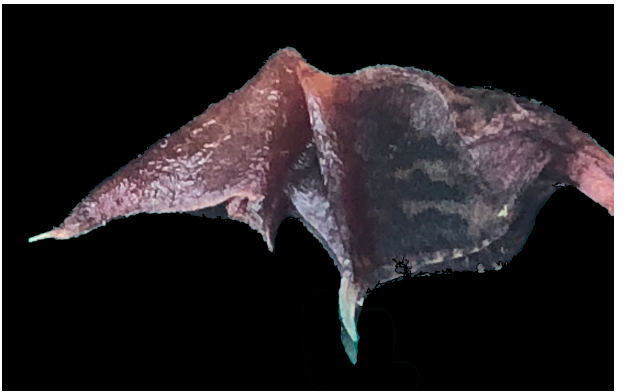
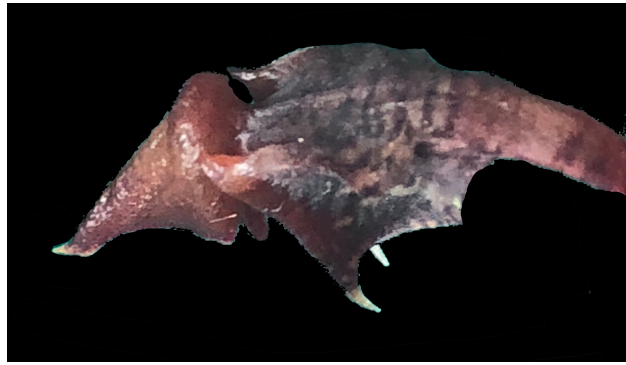
Plant epiphytic, to 24 cm tall with short rhizomes; pseudobulbs clustered, ovate, deeply ridged, to 5 cm tall, 3.5 cm wide, bifoliate; leaves petiolate, broadly elliptic, subacute, to 18 cm long, 6 cm wide, petiole to 3 cm long; inflorescence pendent, to 32 cm long, to 22 flowered, floral bracts triangular, acute, to 2 mm long, 2 mm wide; flowers brownish-yellow with reddish-brown spots and lines; dorsal sepal, obovate, subacute, to 2.0 cm long, 1.2 cm wide; lateral sepals, lanceolate, truncate, acute, reflexed, with revolute edges, to 2 cm long, 0.8 cm wide; petals linear, to 1.0 cm long, 0.3 cm wide; labellum long-clawed, reddish-brown, basally with reddish spots and lines, to 2.4 cm long, 0.8 cm wide; hypochile high with short blunt lateral projections placed near the middle, mesochile reddish-brown with apiculate, yellow bristles, epichile is short acute, with shallow knob-like upper projection; column yellowish-brown with reddish-brown spots, thin wings at the tip, to 1.4 cm long, 0.3 cm wide; anther cap yellowish-brown, to 2 mm wide.



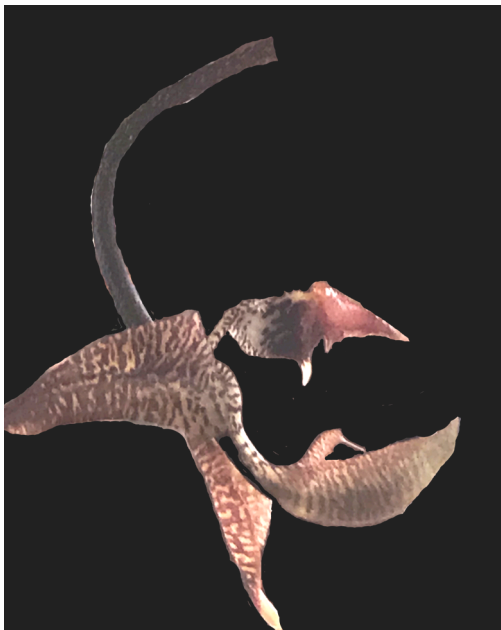
Gongora claudiae Saulea, Uribe-Velez & Szlachetko.



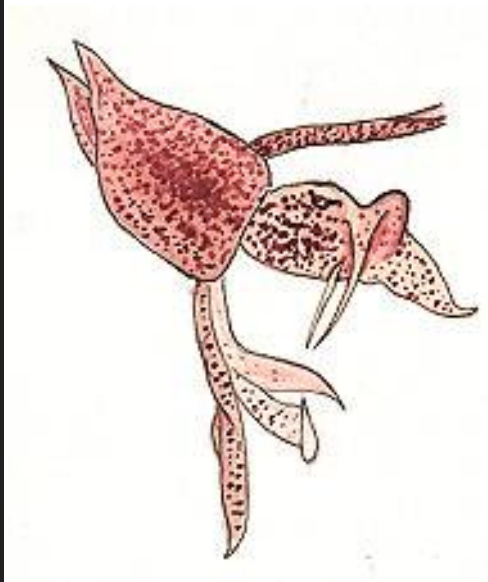
Gongora claudiae Saulea, Uribe-Velez & Szlachetko.



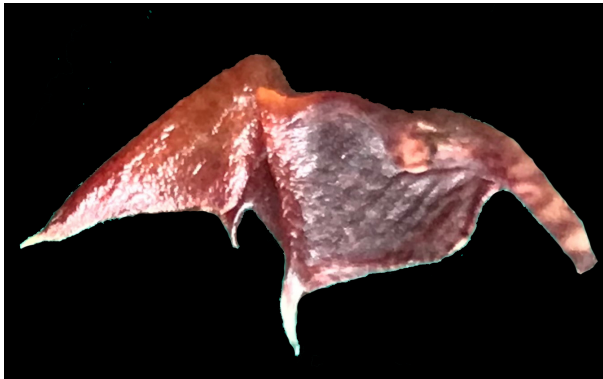
Gongora claudiae Sauleda, Uribe-Velez & Szlachetko.



Gongora claudiae Sauleda, Uribe-Velez & Szlachetko.



Gongora latisejala Rolfe. Illustrations from archive of Pedro Ortiz Valdivieso.



Gongora claudiae Sauleda, Uribe-Velez & Szlachetko.



Gongora maculata Lindl.



Gongora chocoensis Jenny.



Gongora gibba Dressler. Labellum from (Toulemonde, 2001).

Literature Cited

Toulemonde, T. L. 2001. Guia Ilustrada para la Clasificacion del Genero *Gongora* Riuz and Pavon. Segunda edicion, Octubre de 2001.