

July 25, 2022

Gongora gloriana Uribe-Velez, Sauleda & Szlachetko (Orchidaceae), an Addition to the Flora of Colombia.

Carlos Uribe-Velez¹, Ruben P. Sauleda² and Dariusz L. Szlachetko³

¹Calle 115 #5-23 Bogota, Colombia.

²6442 SW 107 Ct. Miami, Fl 33173.

³Department of Plant Taxonomy and Nature Conservation, University of Gdańsk, Wita Stwosza 59, 80-308 Gdańsk, Poland.

Abstract

A new species of *Gongora* Ruiz & Pav. (Orchidaceae) is reported for Colombia, from the Department of Antioquia, near the Espiritu Santo ravine in the village of Uvital in the municipality of Nariño at 800 m.

Introduction

The genus *Gongora* Ruiz & Pav. consists of 69 accepted species of which 27 are found in Colombia (WCSP, 2018). Classifying the species of *Gongora* can be difficult due to the range of color variation found in many of the species. *Gongora aromatica* Rehb. f. and *Gongora chocoensis* Jenny for example are extremely variable in color. However, the basic characteristics of the labellum remain constant within each species. The shape, location and angle of the basal horns and the shape and size of the hypochile, mesochile and epichile are constant within each species. These are the main elements that must be considered in identifying the species.

A population of *Gongora* was discovered in the department of Antioquia, which differs from the known species in the basic elements of the labellum. We here describe it as a new species.

***Gongora gloriana* Uribe-Velez, Sauleda & Szlachetko, sp. nov.**

Type: Colombia, Department of Antioquia. Epiphytic in tall trees near the Espiritu Santo ravine in the village of Uvital in the municipality of Nariño at 800 m. Collector: Francisco Lopez Bernal, s. n., March, 2020. Holotype: HPUJ.

Etymology

This species was named in honor of Gloria Noreña from the Sociedad Colombiana de Orquideología. Gloria Noreña was the cultivator and made the plant available to us for study.

Diagnosis

Gongora gloriana is similar to *Gongora catilligera* R. Rice, differs in that in *C. catilligera* the basal labellum horns are very short, obscure, strongly flaccate, sepals are red-wine with irregular yellow stripes, labellum and gynostemium white or yellowish with irregular red-wine stripes and dots.

Gongora gloriana resembles *Gongora aromatica* and although it has a similar color to some of the color forms, differs in that in *G. aromatica* the labellum is with prominent triangular-ellipsoid projections at the apex of hypochile, basal hypochile projections are short, digitate.

Gongora gloriana is similar to *Gongora chocoensis* but differs from *C. chocoensis* in the color of the flowers. In *G. chocoensis* the labellum is white with blood-red at the apex and large dots on both sides of hypochile, lateral sepals are predominantly white with blood-red inner margins, dorsal sepals and petals are blood-red with more or less whitish stripes, gynostemium is the same color as petals.

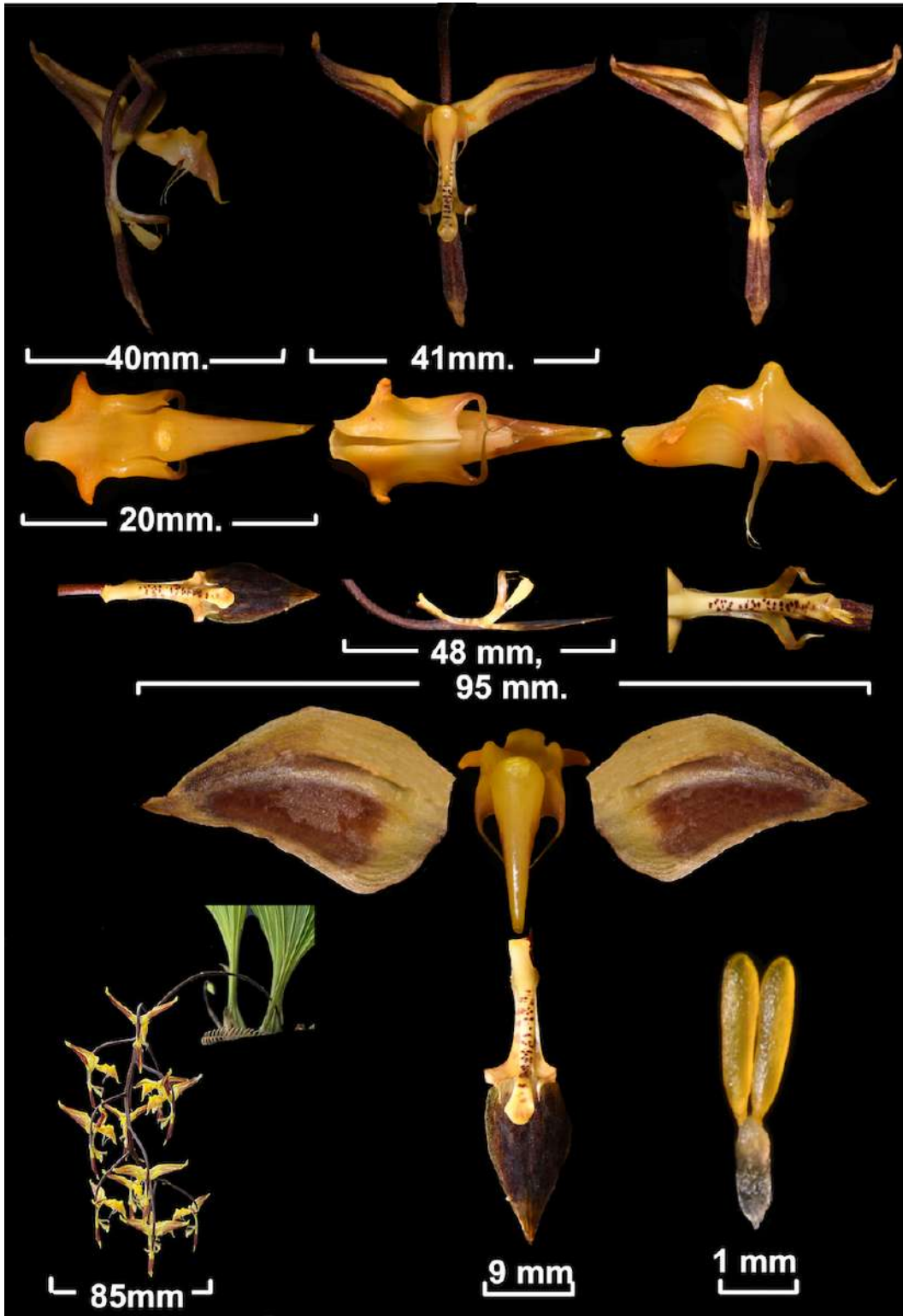
Gongora gloriana is similar to *Gongora rufescens* but differs in the color of the flowers. In *Gongora rufescens* the labellum is yellowish-green with irregular blood-red dots and lines, sepals blood-red with irregular yellowish-green dots and lines, petals dirty green-yellow, gynostemium is greenish with brownish dots. The angle of the hypochile is different and the tip of the mesochile is sharper in *G. gloriana*.

Description

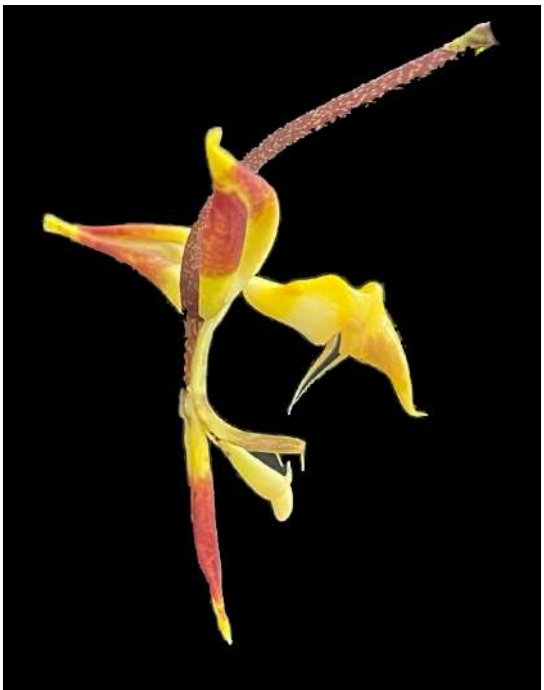
Plant epiphytic with short rhizomes; pseudobulbs clustered, obovate, deeply ridged, to 6 cm tall, 3 cm wide, bifoliate; leaves petiolate, slightly plicate, broadly obovate, acute, to 25 cm long, 12 cm wide, petiole to 4 cm long; inflorescence pendent, to 20 cm long, to 15 flowered, floral bracts triangular, appressed, acute, to 2 mm long, 2 mm wide; dorsal sepal reddish-brown, basally yellow, lanceolate, acute, to 2 cm long, 0.5 cm wide, edges slightly revolute; lateral sepals bright yellow with large dark reddish-brown spot, asymmetrically triangular, truncate, acute, reflexed, with revolute edges, to 4 cm long, 2 cm wide; petals bright yellow, linear, ending in two long acute bristles, to 1.8 cm long, 0.3 cm wide; labellum bright yellow with light brown suffusion on the lower part of the epichile and hypochile, to 2 cm long, 1 cm wide; hypochile with short lateral horns, tips subacute; mesochile tips extended and apiculate, hump distinct; epichile apiculate, recurved; column bright yellow with dark reddish-brown spots, curved, with triangular, obtuse wings at the tip, to 2 cm long, 0.3 cm wide; anther cap bright yellow.



Gongora gloriana Uribe-Velez, Sauleda & Szlachetko.



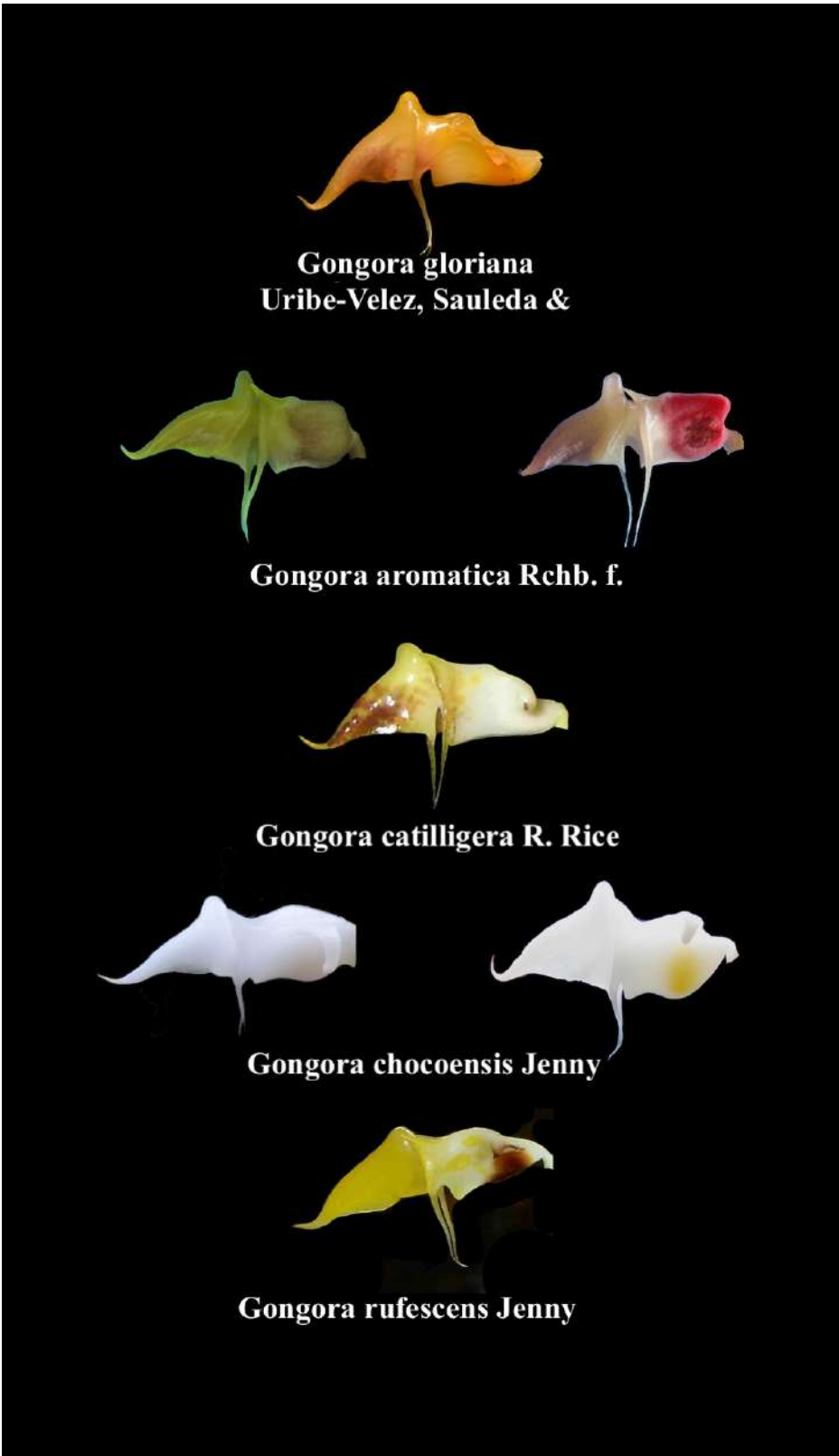
Gongora gloriana Uribe-Velez, Saulea & Szlachetko.



Gongora gloriana Uribe-Velez, Sauleda & Szlachetko.



Gongora gloriana Uribe-Velez, Sauleda & Szlachetko.



Gongora gloriana Uribe-Velez, Sauleda & Szlachetko comparison with similar species.



Gongora aromatica Rehb. f.



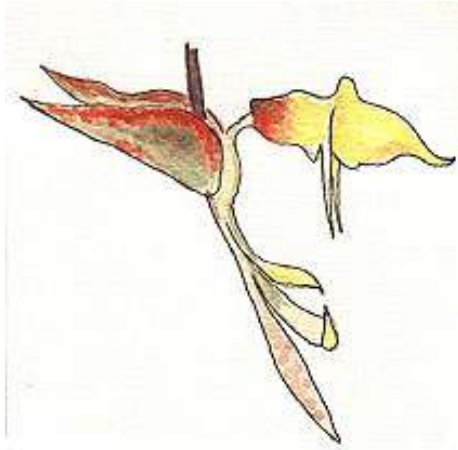
Gongora catilligera R. Rice.



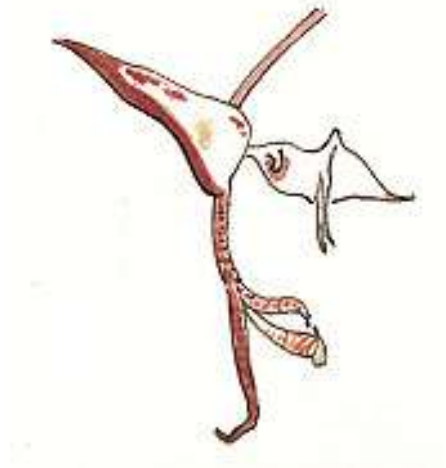
Gongora chocoensis Jenny.



Gongora rufescence (aurea) Jenny.



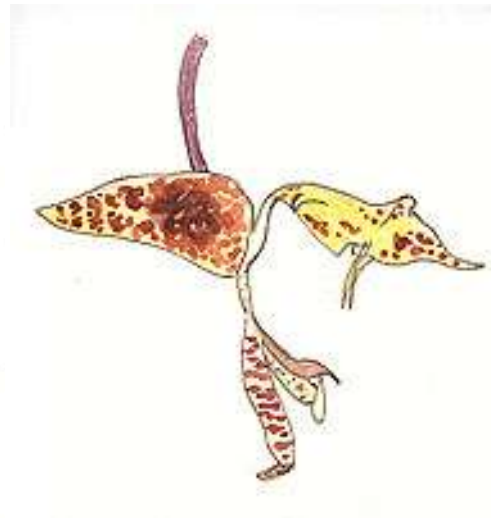
Gongora aromatica Rchb. f.



Gongora chocoensis Jenny.



Gongora catilligera R. Rice.



Gongora rufescens Jenny.

Illustrations from archive of Pedro Ortiz Valdivieso.

Literature Cited

WCSP. 2018. World Checklist Of Selected Plant Families. Facilitated by the Royal Botanic Gardens, Kew. Published on the Internet.