

March 1, 2023.

Zootrophion griffin Luer (Orchidaceae) an Addition to the Flora of Colombia.

Carlos Uribe-Velez¹ and Ruben P. Sauleda²

¹Calle 115 #5-23 Bogota, Colombia.

²6442 SW 107 Ct. Miami, Fl, 33173.

Abstract

Zootrophion griffin Luer (Orchidaceae), a species from Ecuador was discovered in the department of Antioquia, Colombia and is added to the orchid flora of Colombia.

Introduction

The genus *Zootrophion* was established by Carl Luer in 1982 (Selbyana 7(1): 80) to accommodate flowers with lateral sepals fused and a dorsal sepal with the tip fused to the tip of the synsepals leaving a small opening for the pollinator to enter. With the fused tips of the sepals the flowers resemble an animal's head, hence the generic name which means menagerie. There are 32 recognized species with 12 reported for Colombia (WCSP, 2018). The species are native to Central America, South America and the West Indies.

Several plants of a species of *Zootrophion* were discovered epiphytic in the department of Antioquia, Colombia that differed from all of the other Colombian species. It corresponded to *Zootrophion griffin* Luer, a species from Ecuador. We here add this species to the orchid flora of Colombia.

Zootrophion griffin Luer, Selbyana 7: 82. 1982.

Type: Ecuador, Napo: Epiphytic in wet forest near Rio Jatunyacu west of Tena, alt. 600 m. 21 Feb. 1982. C. Luer, A. Hirtz & J. Leon, 6893. Holotype: SEL.

Voucher Specimen: Colombia, Department of Antioquia.

Collector: Jorge Luis Aguirre, s. n., 2021. Specimen made February 2023, from cultivation, (HPUJ).

Description

Plant epiphytic, caespitose to 15 cm tall; roots slender; ramicauls stout, erect, to 5 cm long, enclosed by tubular sheaths; leaf semi-erect, coriaceous, broadly elliptical, petiolate, obtuse to rounded apex, to 10 cm long, 4 cm wide; inflorescence a short raceme of to 3 successive flowers; peduncle to 5 mm long; floral bract acute, to 5 mm long; pedicel to 4 mm long; ovary with ribs erose, to 5 mm long; sepals deep purple from coalescing purple spots on a whitish-yellow background, carinate, connate basally and

apically with a small lateral aperture into an ovoid, box like flower with acute apex; dorsal sepal obovate, concave, arcuate, acute, to 18 mm long, 5 mm wide, connate to the synsepal apically for 4 mm and basally for 10 mm, creating lateral apertures to 3 mm long, above the middle; lateral sepals completely connate into a concave, obtuse synsepal, to 16 mm long, 8 mm wide, with a triangular cavity at base to accommodate the labellum; petals translucent purple, oblong-subquadrate, truncate apex acuminate, to 4 mm long, 2 mm wide; labellum dark red, oblong-sagitate, 3-lobed, 5 mm long, 2 mm wide, apical third acute, minutely denticulate, verrucose, margins of the middle third erect with longitudinal calli terminating with retrose, rounded lateral lobes, disc with tall, acute, verrucose, conical callus above the base, base hinged to column-foot; column red, stout, semiterete to 2 mm long, bidentate at the apex; anther cap red.



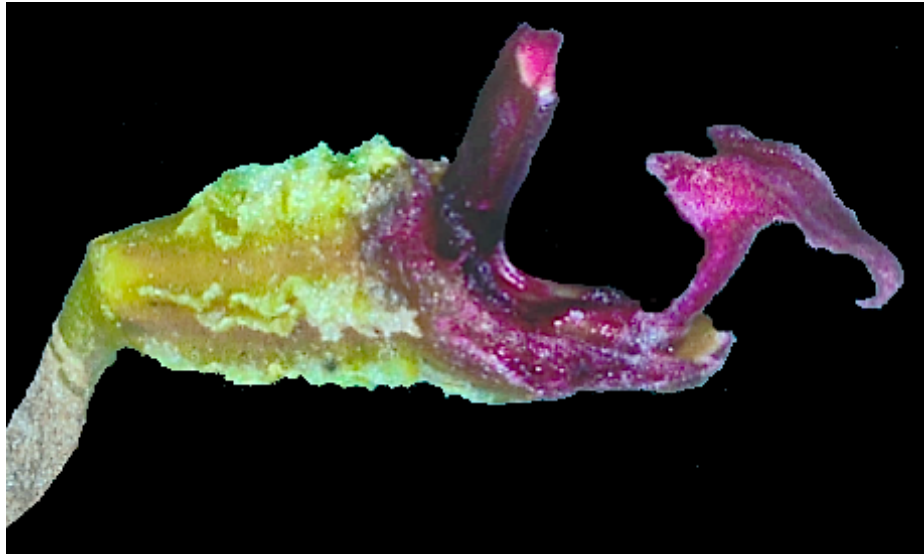
Zootrophion griffin Luer.



Zootrophion griffin Luer.



Zootrophion griffin Luer.



Zootrophion griffin Luer column and labellum.



Zootrophion griffin Luer petal.



Zootrophion griffin Luer.



Zootrophion griffin Luer.

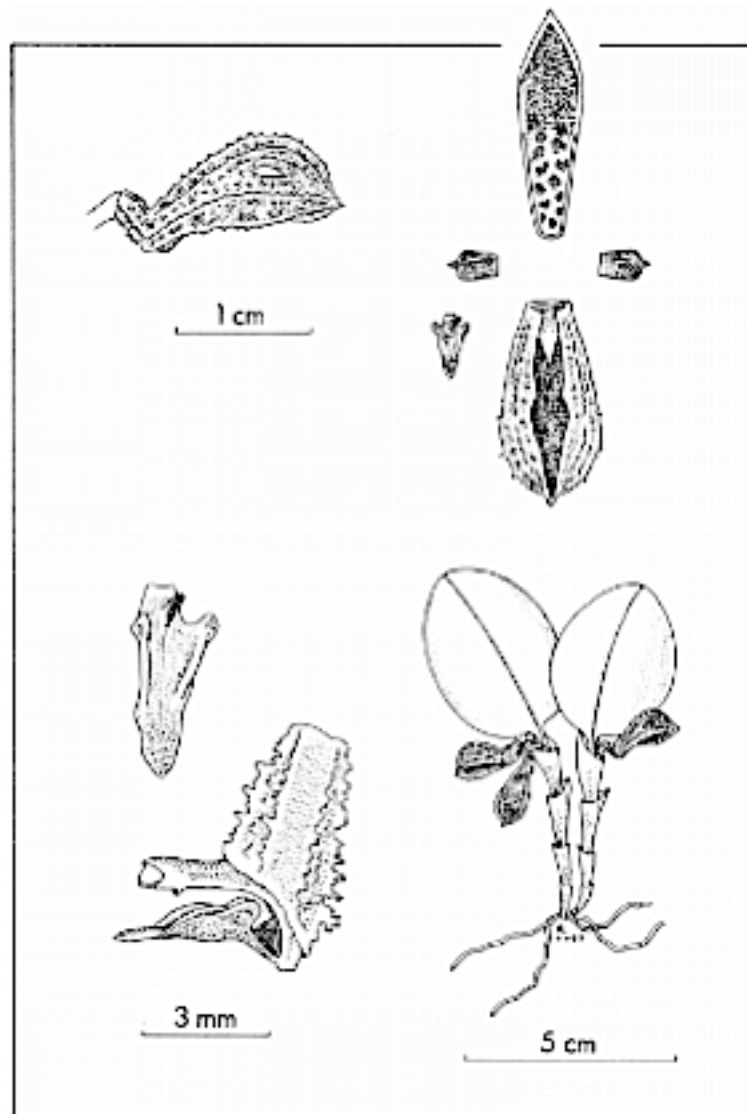


Figure 15. ZOOTROPHION GRIFFIN Luer

From: *Zootrophion griffin* Luer, in Luer, C. A. 1982. *Ophidion and Zootrophion*, Two New Genera in the Pleurothallidinae (Orchidaceae). *Selbyana*, Vol. 7, No. 1.

Literature Cited

WCSP (2018). World Checklist of Selected Plant Families.
Facilitated by the Royal Botanic Gardens, Kew. Published on the Internet.